



TECH
CONTROLLERS



USER'S MANUAL
EUR-95

TECH STEROWNIKI
Spółka z ograniczoną odpowiedzialnością SP. z o.o.
Biała Droga 31
34-122 Wieprz

SERWIS 32-652 Bulowice,
ul. Skotnica 120

Tel. +48 33 8759380, +48 33 3300018
+48 33 8751920, +48 33 8704700

serwis@techsterowniki.pl

Zgłoszenia serwisowe przyjmowane są:

Monday - Friday
7:00 - 16:00

Saturday

WARRANTY CARD

TECH company ensures to the Buyer proper operation of the device for the period of 24 months from the date of sale. The Guarantor undertakes to repair the device free of charge if the defects occurred through the manufacturer's fault. The device should be delivered to its manufacturer. Principles of conduct in the case of a complaint are determined by the Act on specific terms and conditions of consumer sale and amendments of the Civil Code (Journal of Laws of 5 September 2002).

CAUTION! THE TEMPERATURE SENSOR CANNOT BE IMMERSSED IN ANY LIQUID (OIL ETC). THIS MAY RESULT IN DAMAGING THE CONTROLLER AND LOSS OF WARRANTY! THE ACCEPTABLE RELATIVE HUMIDITY OF THE CONTROLLER'S ENVIRONMENT IS 5÷85% REL.H. WITHOUT THE STEAM CONDENSATION EFFECT. THE DEVICE IS NOT INTENDED TO BE OPERATED BY CHILDREN.

The costs of unjustifi able service call to a defect will be borne exclusively by the buyer. The unjustifi able service call is defi ned as a call to remove damages not resulting from the Guarantor's fault as well as a call considered unjustifi able by the service after diagnosing the device (e.g. damage of the equipment through the fault of the client or not subject to Warranty), or if the device defect occurred for reasons lying beyond the device.

In order to execute the rights arising from this Warranty, the user is obliged, at his own cost and risk, deliver the device to the Guarantor along with a correctly fi lled-in warranty card (containing in particular the sale date, the seller's signature and a description of the defect) and sales proof (receipt, VAT invoice, etc.). The Warranty Card is the only basis for repair free of charge. The complaint repair time is 14 days.

When the Warranty Card is lost or damaged, the manufacturer does not issue a duplicate.

.....
seller's stamp

.....
date of sale

Safety

Before using the device for the first time the user should read the following regulations carefully. Not obeying the rules included in this manual may lead to personal injuries or controller damage. The user's manual should be stored in a safe place for further reference. In order to avoid accidents and errors it should be ensured that every person using the device has familiarized themselves with the principle of operation as well as security functions of the controller. If the device is to be sold or put in a diff erent place, make sure that the user's manual is there with the device so that any potential user has access to essential information about the device.

The manufacturer does not accept responsibility for any injuries or damage resulting from negligence; therefore, users are obliged to take the necessary safety measures listed in this manual to protect their lives and property.



WARNING

- The regulator should not be operated by children.
- Any use other than specifi ed by the manufacturer is forbidden.



We are committed to protecting the environment. Manufacturing electronic devices imposes an obligation of providing for environmentally safe disposal of used electronic components and devices. Hence, we have been entered into a register kept by the Inspection For Environmental Protection. The crossed-out bin symbol on a product means that the product may not be disposed of to household waste containers. Recycling of wastes helps to protect the environment. The user is obliged to transfer their used equipment to a collection point where all electric and electronic components.

Description

The EU-R-9s room regulator is designed to:

- maintain the desired room / floor temperature by sending a signal to the heating device.
- send a signal to EU-L-9 controlling the actuators with information on the need to heat the room / floor. After receiving such a signal, the heating device unblocks the flow on the thermostatic valve.

Controller assets:

- built-in temperature sensor
- built-in humidity sensor
- possibility of connecting floor sensor
- wall-mountable cover
-

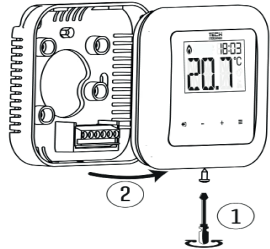
Use touch buttons PLUS, MINUS, EXIT and MENU to navigate through the menu structure. In order to edit a given parameter, press MENU. Use MENU button to view further options - the icon of the edited parameter is flashing, the remaining icons are blank. In order to change the settings, use PLUS and MINUS buttons. Once a change has been introduced, confirm by pressing MENU button or EXIT button.

Technical data

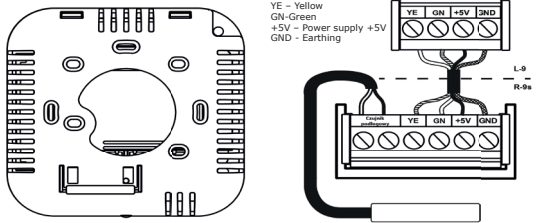
Range of room temperature settings.....	5-35°C
Power supply	5V DC
Power consumption.....	0,05W
Accuracy of measurement.....	+/-0,5°C

Installation

The controller should be installed by a qualified person.



The room regulator should be connected to the heating device using a cable, as illustrated below:



How to register the room regulator in a given zone

To register the EU-R-9s regulator in the selected zone, select „Register” in EU-L-9 menu (Menu> Zones> Zone 1-8> Sensor type> Wired). After selecting the „Registration” option in the EU-L-9 menu, start the registration in the R-9s sensor menu. To do this, press the MENU button (a screen with the word REG will appear), and then hold the PLUS and MINUS buttons simultaneously for about 2 seconds.

If the registration process has been completed successfully, EU-L-9 screen displays an appropriate message whereas the room sensor screen displays Scs. If the room sensor displays Err, an error has occurred during the registration process.



NOTE

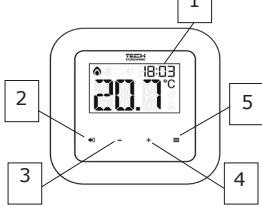
Only one room regulator may be assigned to a zone.

Clock settings

The user can set the current time which will be displayed on the screen of the EU-R-9s regulator. To do this, press the MENU button until the screen with the word TIM appears. Use the PLUS or MINUS button to select ON (the right upper part of the screen). Use the PLUS or MINUS buttons to set the hour and minute. The selection is confirmed by the MENU button.

By selecting the OFF option (the right upper part of the screen), the user determines that the current time will be taken from the EU-L-9 external controller.

Main screen description



1.Display

2.EXIT button - When entering the controller menu, the button is used to return to the main screen. From the home screen, pressing this button will display information about the temperature from the room sensor, the humidity of the air and the temperature from the floor sensor.

3.MINUS button - pressing this button in the main screen view activates manual mode and decreases the pre-set temperature. After entering the menu, this button is used to adjust parameters.

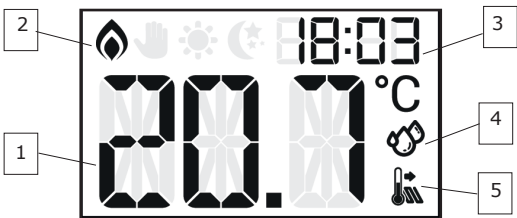
4.PLUS button - pressing this button in the main screen view activates manual mode and increases the pre-set temperature. After entering the menu, this button is used to adjust parameters.

5.MENU button - press and hold the button to enter the controller menu. When editing parameters, pressing the MENU button confirms the changes and proceeds to edit the next parameter.



NOTE

If you press the MENU button and hold it for about 3 seconds, the screen will display information about the software version. Press Menu button again if you want to restore the controller factory settings. To restore the factory settings, change from F00 to F01 function using PLUS button and confirm by pressing MENU button. Once factory settings have been restored, it is necessary to register the regulator in a given zone.



- 1.Current temperature
- 2.Heating to pre-set temperature active
- 3.Current time
- 4.Air humidity reading
- 5.Floor temperature reading (The icon is displayed only when the floor sensor is switched on in the controller menu)

How to change the pre-set temperature

The pre-set zone temperature may be adjusted directly from EU-R-9s room sensor using PLUS and MINUS buttons.

During controller inactivity, the main screen displays current zone temperature. After pressing PLUS or MINUS, the current temperature is replaced with the pre-set temperature (the digits are flashing). After setting desired value wait for 4 seconds - after this time the displayshows a panel to define how long the new setting should apply.

Time settings may be adjusted:

- permanently - press PLUS button until Con appears on the screen (the pre-set value will apply all the time regardless of schedule settings)

- for a specified number of hours - press PLUS or MINUS until the desired number of hours appears on the screen e.g. 01h (the pre-set value will apply for a specified period of time; after that the weekly schedule will apply)

- if the temperature value defined in the weekly schedule settings should apply, press MINUS until the screen displays OFF.

EU Declaration of conformity

Hereby, we declare under our sole responsibility that **EU-R-9s** manufactured by TECH, headquartered in Wieprz Biała Droga 31, 34-122 Wieprz, is compliant with:

• Directive 2014/35/EU of the European Parliament and of the Council of February 26, 2014 on the harmonisation of the laws of Member States relating to electromagnetic compatibility (EU Journal of Laws L 96 of 29.03.2014, p. 357),

• Directive 2014/30/EU of the European Parliament and of the Council of February 26, 2014 on the harmonisation of the laws of Member States relating to electromagnetic compatibility (EU Journal of Laws L 96 of 29.03.2014, p.79),

• Directive 2009/125/EC establishing a framework for the setting of ecodesign requirements for energy-related products,

• the regulation by the Ministry of Economy of May 8, 2013 concerning the essential requirements as regards the restriction of the use of certain hazardous substances in electrical and electronic equipment, implementing provisions of RoHS directive 2011/65/EU.

For compliance assessment, harmonized standards were used: PN-EN 60730-2-9:2011, PN-EN 60730-1:2016-10..

Paweł Jura
PAWEŁ JURA
WŁAŚCICIELE TECH SPÓŁKA Z OGRANICZONĄ ODPOWIEDZIALNOŚCIĄ SP. K.

Janusz Master
JANUSZ MASTER

Wieprz, 24.01.2020